



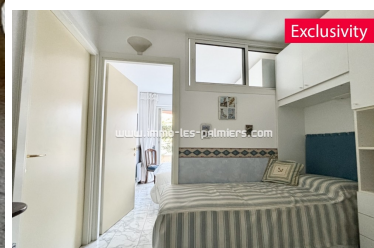
**SALES**

**291 500 €**

**INCLUSIVE AGENCY FEES**

**Ground floor beach area 38 m<sup>2</sup>**

**ROQUEBRUNE CAP MARTIN**



**PROPERTY DESCRIPTION**

**Ground floor beach area 38 m<sup>2</sup>**

<b>Reference</b>	784
<b>Apartment</b>	2 pièces
<b>Standing</b>	Normal
<b>Sight</b>	Without
<b>Livable surface</b>	38 m <sup>2</sup>
<b>Surface terrace</b>	20 m <sup>2</sup>
<b>Site conveys</b>	1
<b>Type of vehicle location</b>	Indoor garage
<b>Floor</b>	R.D.C
<b>Service</b>	
<b>Heating</b>	Individual
<b>T. heating</b>	Electrical
<b>Cellar</b>	Yes
<b>Loads</b>	1020 €
<b>Tax land</b>	Undisclosed
<b>Tax dwelling</b>	Undisclosed
<b>Handicapped ac.</b>	No
<b>Exposure</b>	Sud-est

- SALES
- APARTEMENT
- 2 PIÈCES
- NORMAL
- WITHOUT
- INDOOR GARAGE
- R.D.C.
- ELECTRICAL
- ROQUEBRUNE CAP MARTIN
- 150M SEA
- SUD-EST

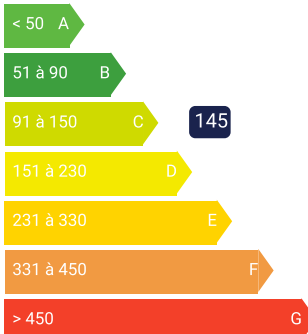
**CO-OWNERSHIP**

<b>Number of batches</b>	Undisclosed
<b>Loads</b>	1020 €

**ENERGY PERFORMANCE DIAGNOSTICS**

ENERGETIC ASSESSMENT C

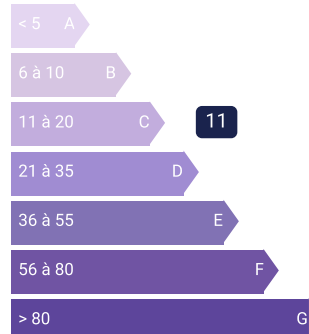
Low-cost housing



Energy-intensive housing  
kWhEP/m<sup>2</sup>.for

BALANCE GREENHOUSE GASES C

Low GHG emissions



High GHG emissions  
kWhEP/m<sup>2</sup>.for/li>